

**Test:** Primary 4 Science (Term 1) - School RS

**Points:** 30 points

**Name:** \_\_\_\_\_

**Score:** \_\_\_\_\_

**Date:** \_\_\_\_\_

**Signature:** \_\_\_\_\_

Select multiple choice answers with a cross or tick:

Only select one answer

Can select multiple answers

MCQ (22 Marks)

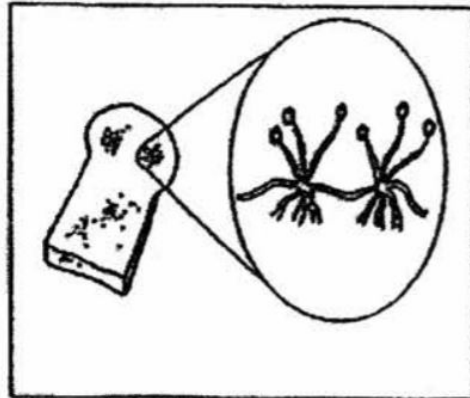
For each question, four options are given. One of them is the correct answer. Make your choice (A, B, C or D) and write your answer in the brackets provided.

Which of the following organism(s) does/do not reproduce by spores?

A. tomato plant



B. bread mould



C. sunflower plant

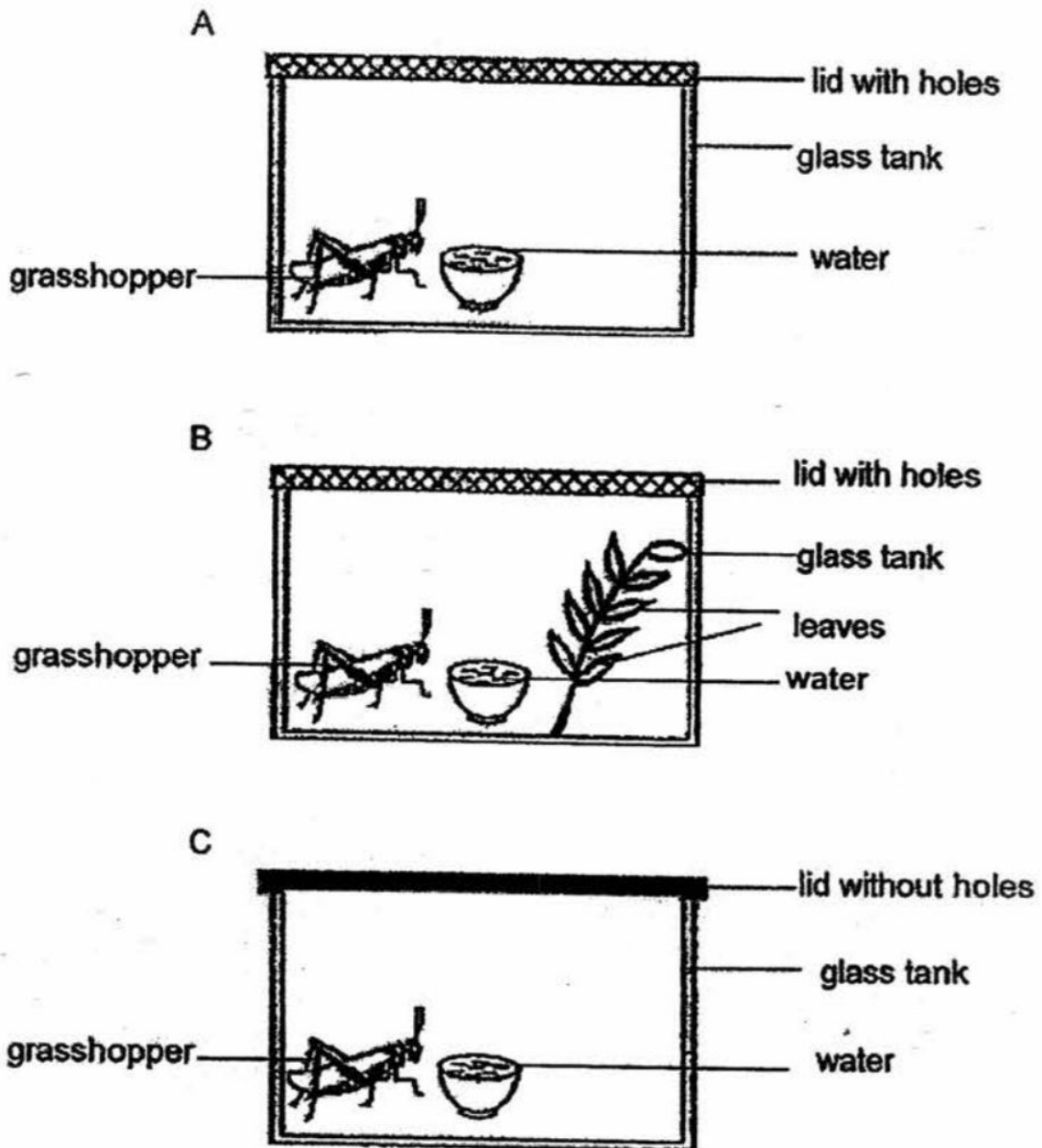


D. Bird Nest Fern



- A) D only  
 B) A and C only  
 C) B and C only  
 D) A, B and D only

Jack wanted to keep a grasshopper as a pet. He thought of three possible ways A, B and C to keep his grasshopper alive.



Which of the following is correct?

- A)
- | Least suitable way to keep the grasshopper | Most suitable way to keep the grasshopper |
|--|---|
| C  | B   |
- B)
- | Least suitable way to keep the grasshopper | Most suitable way to keep the grasshopper |
|--|---|
| A  | C   |
- C)
- |  |  |
|--|--|
|  |  |
|--|--|

	Least suitable way to keep the grasshopper	Most suitable way to keep the grasshopper
	C	A
<input type="radio"/> D)	Least suitable way to keep the grasshopper	Most suitable way to keep the grasshopper
	A	B

**Question 3 of 26**

Primary 4 Science (Term 1) 2 pts

Four pupils observed three specimens and recorded their observations in a table. The table shows the characteristics shown by the three specimens A, B and C.

	Needs air	Needs food	Needs water	Needs sunlight	Can move from place to place
A	√	√	√		
B	√	√	√		√
C					√

The pupils made the following statements based on their observations.

- Zaki : A is a plant.  
 Nick : B is an animal.  
 Rani : C is a living thing.  
 Lili : A is a non-living thing.

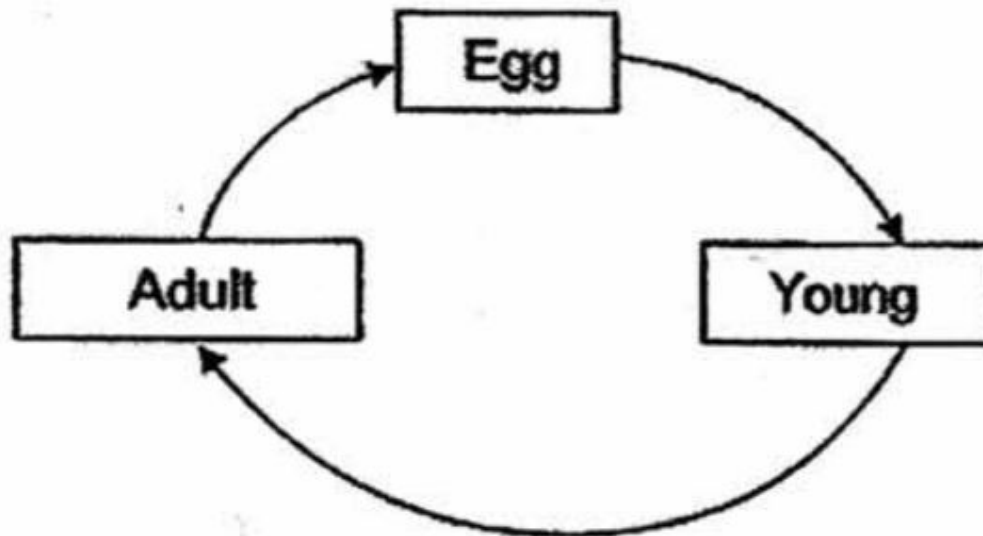
Who made the correct statements?

- A) Zaki and Rani only  
 B) Nick and Lili only  
 C) Zaki and Nick only  
 D) Rani and Lili only

**Question 4 of 26**

Primary 4 Science (Term 1) 2 pts

The diagram below shows a life cycle.



Which group of animals may not have a similar life cycle shown above?

- A) Insects
- B) Birds
- C) Amphibians
- D) Reptiles

**Question 5 of 26**

Primary 4 Science (Term 1) 2 pts

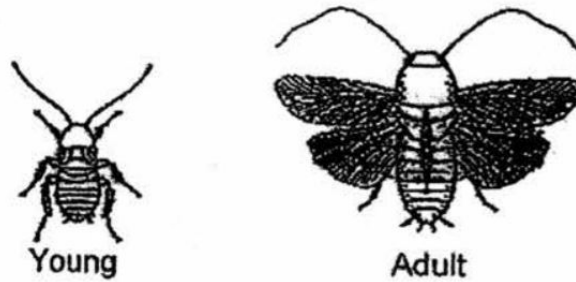
Jack kept four mealworm beetles, W, X, Y and Z. They are at different stages of their life cycles. He kept each mealworm beetle in a separate container and he placed 20 g of food in each container. He measured the mass of food left in the container after 3 days and recorded the results in a table.

Mealworm	Mass of food left (g)
W	20
X	12
Y	10
Z	7

Which mealworm is most likely to be in the pupa stage?

- A) W
- B) X
- C) Y
- D) Z

The diagram below shows the young and adult of a cockroach.



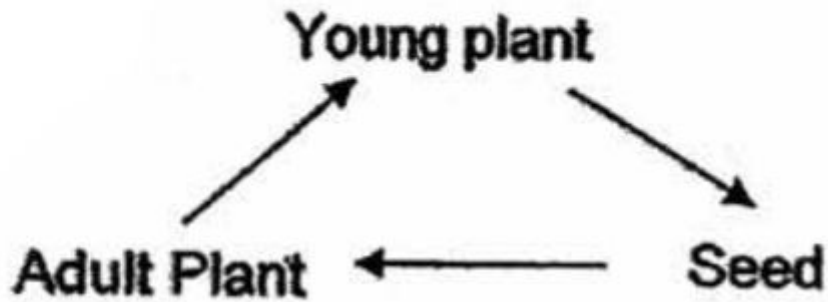
Which of the following statements is/are correct about the young and the adult?

- A. Both have feelers.
- B. The young does not resemble the adult.
- C. The young does not have wings but the adult has wings.

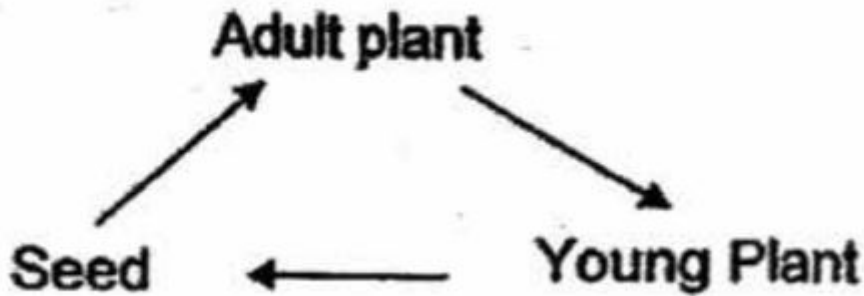
- 
- A) A only
  - B) A and C only
  - C) B and C only
  - D) A, B and C

Which one of the following shows the correct order of stages in the life cycle of a flowering plant?

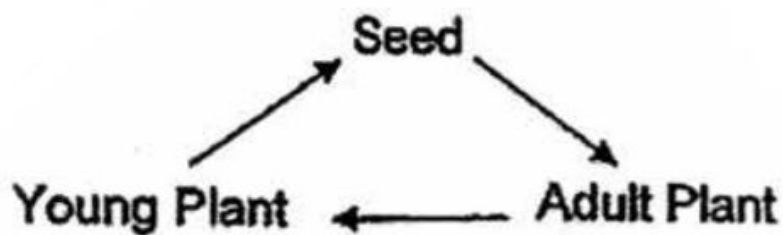
A)



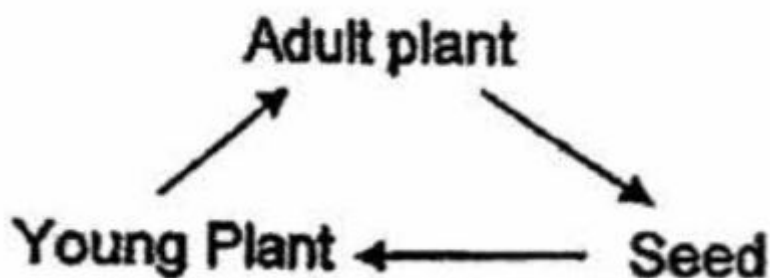
B)



C)



D)



The following statements show the different stages of a seed germinating into a seedling.

- A. The shoot grows upwards.
- B. The root grows downwards.
- C. The seedling develops its first leaves.
- D. The young plant uses sunlight to make food.

Which one of the following options shows the correct stages of growth?

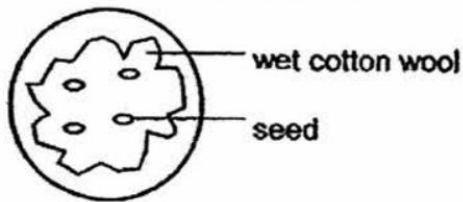
---

- A) **A → C → B → D**
- B) **B → A → C → D**
- C) **C → A → D → B**
- D) **C → D → A → B**

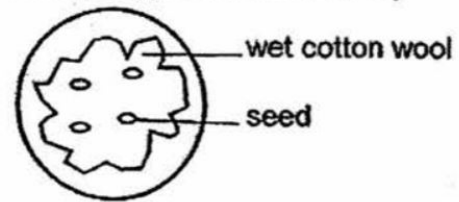


Krishnan set up an experiment as shown in the diagram.

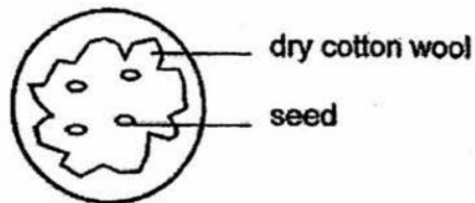
Set-up 1 ( placed under light )



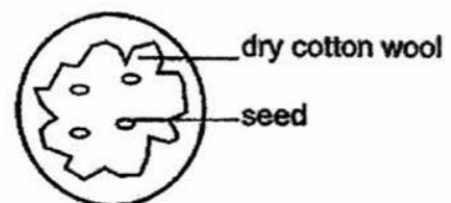
Set-up 2 ( placed in the dark )



Set-up 3 ( placed under light )



Set-up 4 ( placed in the dark )



**At the end of the experiment, he observed that only the seeds in set-up 1 and set-up 2 grew into seedlings.**

What can Krishnan infer from his observations?

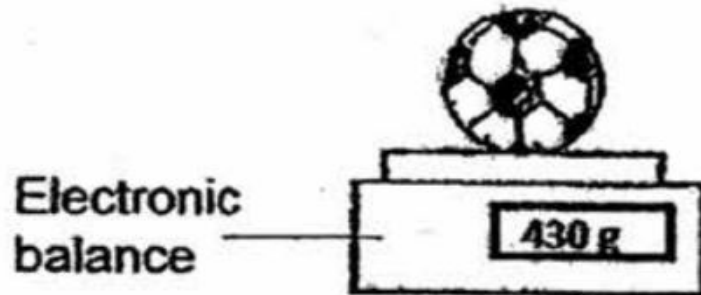
- A) Seeds need light to germinate.
- B) Seeds need warmth to germinate.
- C) Seeds need water to grow into seedlings.
- D) Seeds need water, light and cotton wool to grow into seedlings.

Which of the following is not a matter?

- A) air
- B) heat
- C) sand
- D) water

Sam did an experiment as shown in the diagram below. First, he measured the mass of a ball using an electronic balance and recorded it. Next, he pumped more air into the ball using a hand pump. Then, he measured the mass of the ball again and recorded it.

First



Next



Which one of the following results is most likely to be Sam's set of readings and explanation?

- A)
- | Mass of ball at first (g) | Mass of ball after more air was pumped in (g) | Explanation  |
|---------------------------|---|--------------|
| 430                       | 410   | Air has mass |
- B)
- | Mass of ball at first (g) | Mass of ball after more air was pumped in (g) | Explanation        |
|---------------------------|---|--------------------|
| 430                       | 430   | Air takes up space |
- C)
- | Mass of ball at first (g) | Mass of ball after more air was pumped in (g) | Explanation |
|---------------------------|---|-------------|
|                           |   |             |

	430	445	Air has mass
<input type="radio"/> D)	<b>Mass of ball at first (g)</b>	<b>Mass of ball after more air was pumped in (g)</b>	<b>Explanation</b>
	430	450	Air takes up space

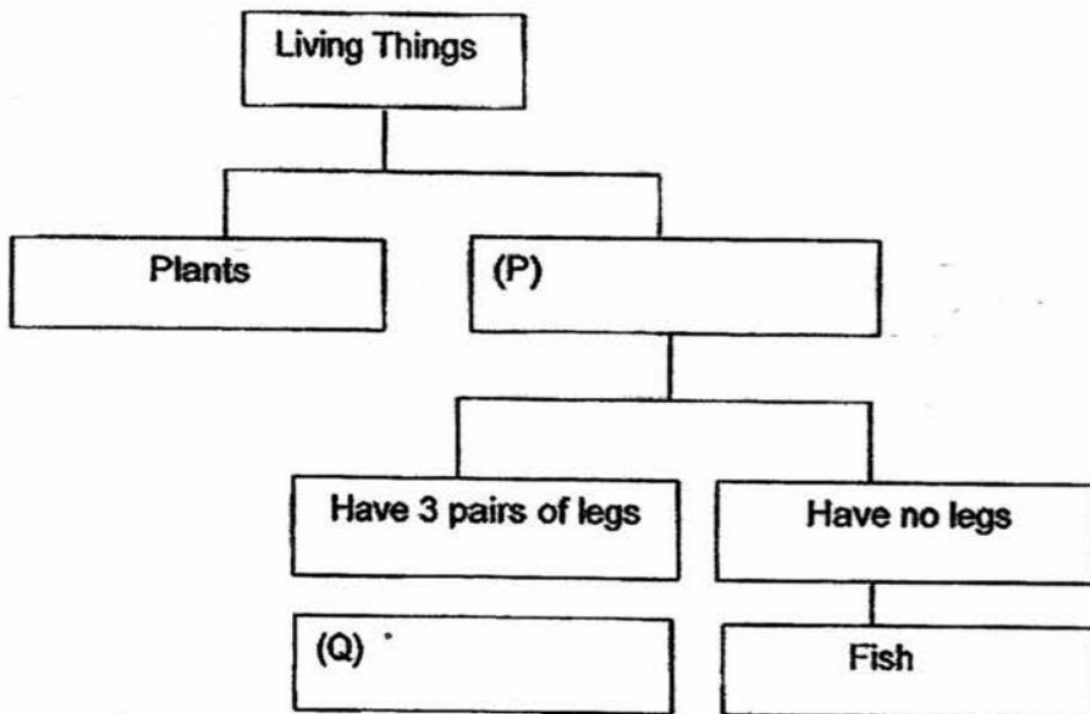
**Question 12 of 26**

Primary 4 Science (Term 1)

1 pt

For each question, write your answers in the space provided.

Study the classification chart below.

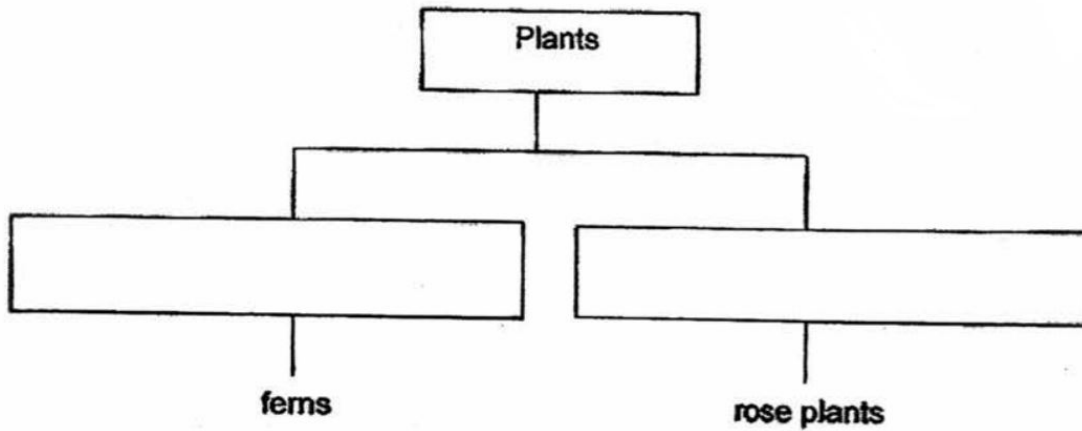


Complete the classification chart above by filling in the boxes P and Q with suitable headings.

**Question 13 of 26**

Primary 4 Science (Term 1) 2 pts

How would you classify plants into two groups? Write your answers in the spaces provided.

**Question 14 of 26**

Primary 4 Science (Term 1) 0 pts

Billy planted a seed and observed it for 5 weeks. The seed germinated and he measured the height of the seedling every week and recorded it over five weeks.

Week	Height (cm)
1	2
2	5
3	9
4	12
5	16

What characteristic of living things does the plant show?

*This question is designed for extended answers that parent/ teacher will have to assign and guide child to attempt after the test has been completed.*

*Grading: This question type is not graded on this system and will not affect the final score as it was designed in such a way that it requires manual assistance.*

**Question 15 of 26**

Primary 4 Science (Term 1) 0 pts

Billy planted a seed and observed it for 5 weeks. The seed germinated and he measured the height of the seedling every week and recorded it over five weeks.

Week	Height (cm)
1	2
2	5
3	9
4	12
5	16

In week 10, another similar young plant was observed to be growing beside Billy's plant. Other than your answer in the previous question, state another characteristic of living things shown here.

*This question is designed for extended answers that parent/ teacher will have to assign and guide child to attempt after the test has been completed.*

*Grading: This question type is not graded on this system and will not affect the final score as it was designed in such a way that it requires manual assistance.*

---

**Question 16 of 26**

Primary 4 Science (Term 1) 0 pts

**The picture below shows a caterpillar.**



A caterpillar is the young of an insect. Draw the life cycle of the insect in the space provided.

*This question is designed for extended answers that parent/ teacher will have to assign and guide child to attempt after the test has been completed.*

*Grading: This question type is not graded on this system and will not affect the final score as it was designed in such a way that it requires manual assistance.*

---

**The picture below shows a caterpillar.**



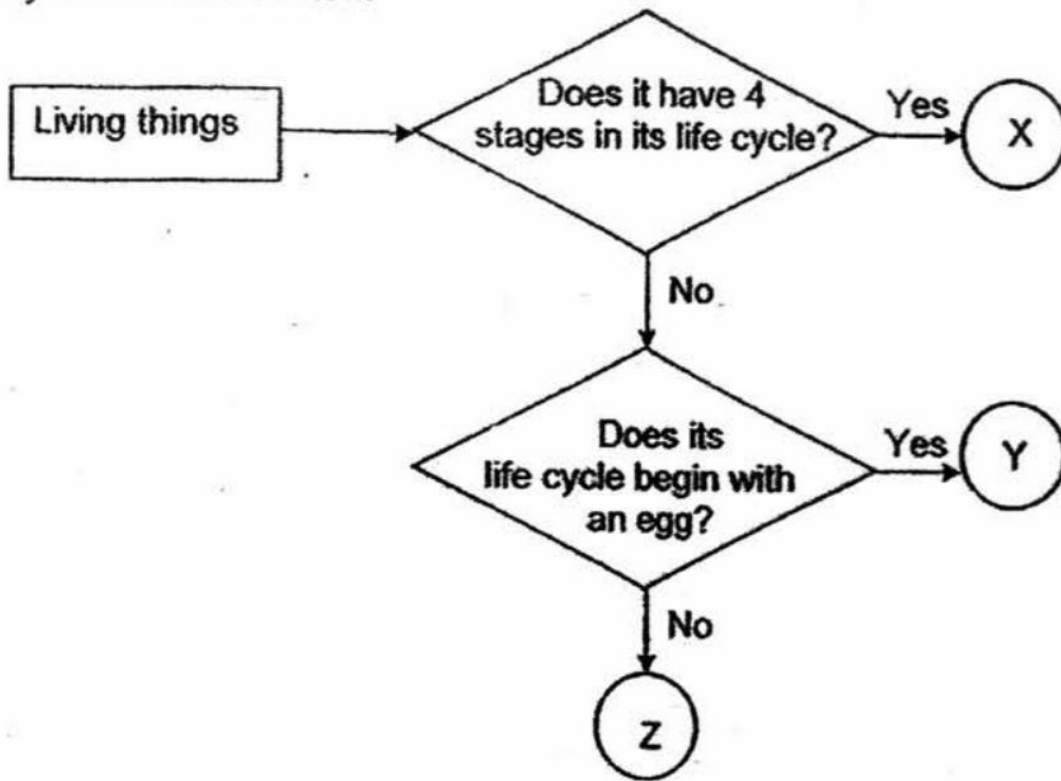
The adult of the caterpillar lay their eggs on the leaves of some plants. Give a reason why they lay their eggs there.

*This question is designed for extended answers that parent/ teacher will have to assign and guide child to attempt after the test has been completed.*

*Grading: This question type is not graded on this system and will not affect the final score as it was designed in such a way that it requires manual assistance.*

---

Study the flowchart below.



Based on the flowchart above, which of the letters X, Y and Z represent the following things?

1. [ ] Plant:

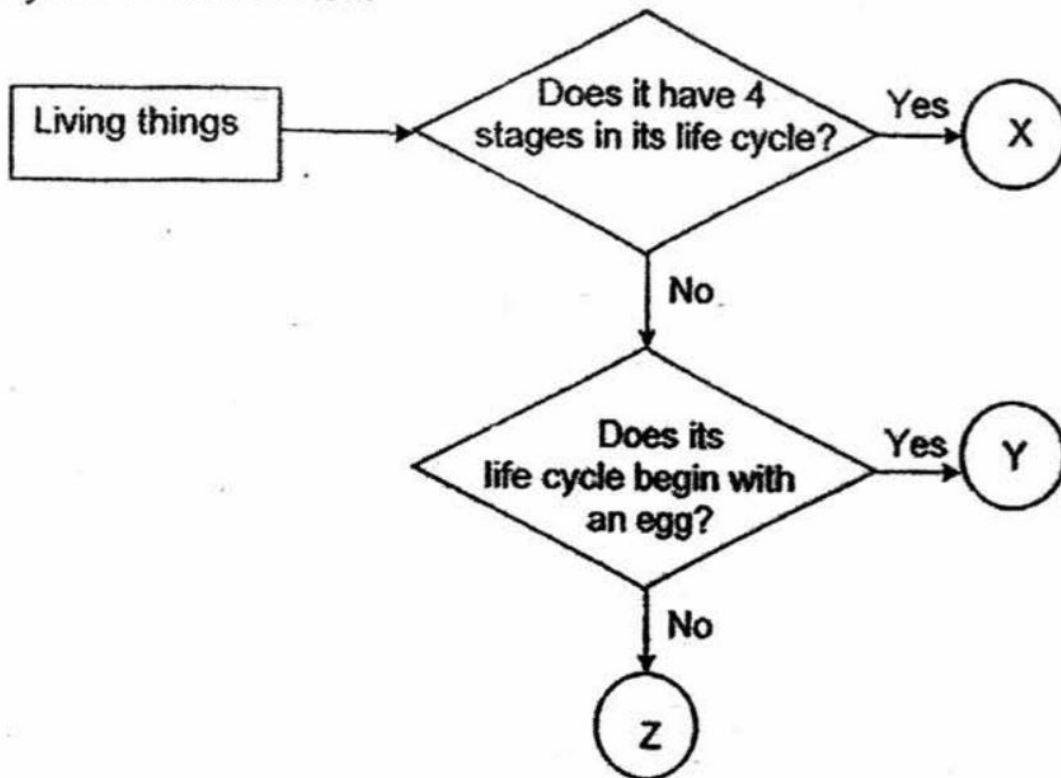
A. X

2. [ ] Frog:

B. Y

C. Z

Study the flowchart below.



Based on the flowchart, what is the difference between X and Z?

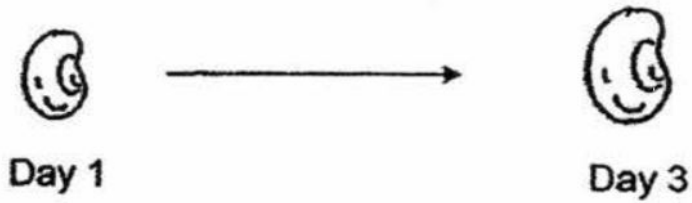
*This question is designed for extended answers that parent/ teacher will have to assign and guide child to attempt after the test has been completed.*

*Grading: This question type is not graded on this system and will not affect the final score as it was designed in such a way that it requires manual assistance.*

---



**Kai Li placed a seed in a container of moist cotton wool for three days. She observed the seed and drew her observations below.**



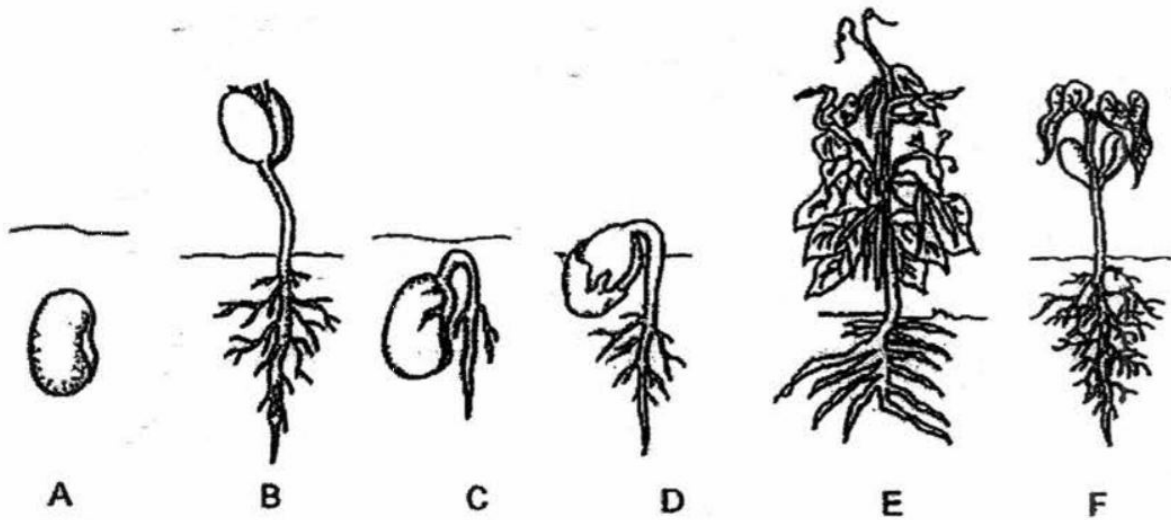
Explain what has caused the seed to increase in size.

*This question is designed for extended answers that parent/ teacher will have to assign and guide child to attempt after the test has been completed.*

*Grading: This question type is not graded on this system and will not affect the final score as it was designed in such a way that it requires manual assistance.*

---

The following pictures show the different developmental stages of growth of the seed into a plant.

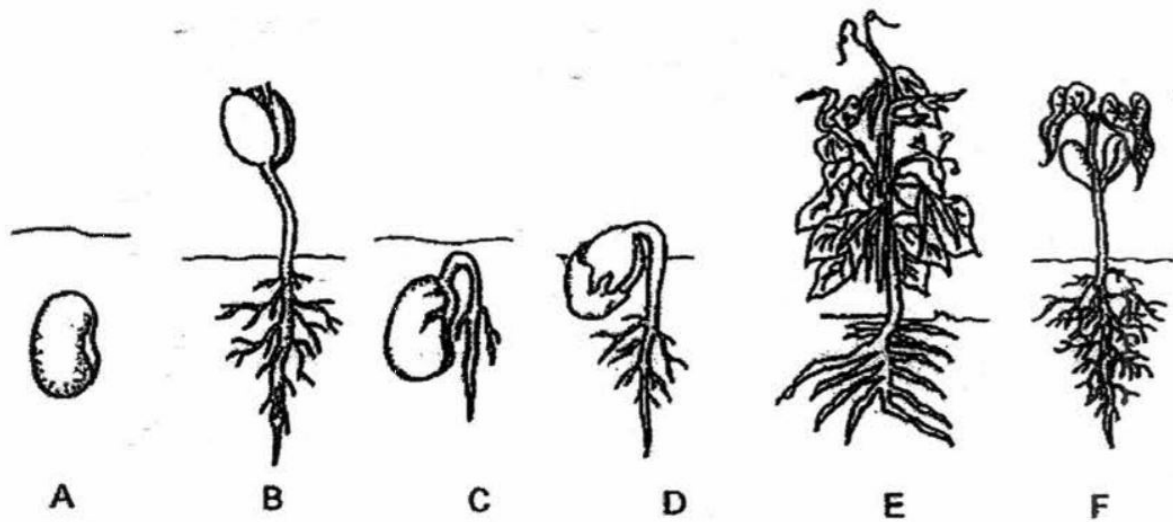


Rearrange the above stages (A to F) in the correct order. The first letter 'C' is already done for you.

[1]

→  →  →  →  →

The following pictures show the different developmental stages of growth of the seed into a plant.



Rearrange the above stages (A to F) in the correct order. The first letter 'C' is already done for you.

[1]

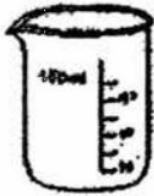


At which stages (A to F) can the plant make its own food? State your reason why.

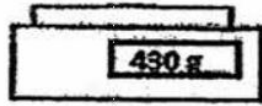
*This question is designed for extended answers that parent/ teacher will have to assign and guide child to attempt after the test has been completed.*

*Grading: This question type is not graded on this system and will not affect the final score as it was designed in such a way that it requires manual assistance.*

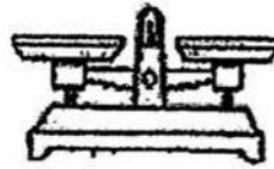
The diagrams below show some apparatus commonly used in Science experiments.



A



B



C

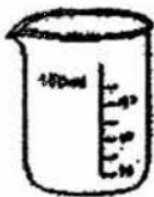


D

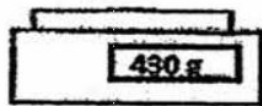
Which two apparatus (A, B, C, D) are used to measure the mass of objects?

- A) A
- B) B
- C) C
- D) D

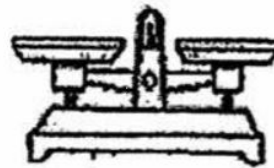
The diagrams below show some apparatus commonly used in Science experiments.



A



B



C



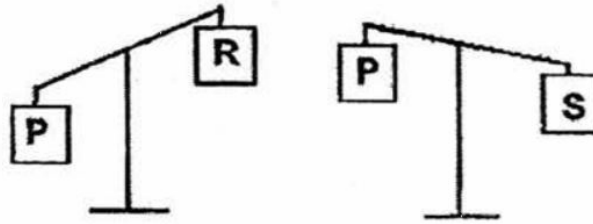
D

What do the other two apparatus (A and D) measure?

*This question is designed for extended answers that parent/ teacher will have to assign and guide child to attempt after the test has been completed.*

*Grading: This question type is not graded on this system and will not affect the final score as it was designed in such a way that it requires manual assistance.*

Joe was given a lever balance. He used it to compare the masses of three objects as shown in the diagram below.

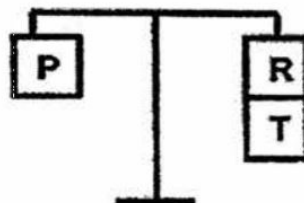


Study the diagram carefully and arrange the objects, P, R and S according to their masses from the lightest to the heaviest.

--	--	--

**Lightest**

Joe placed another object, T, on the first lever balance together with R. The diagram below shows what he observed..



**What can you infer about the mass of P, R and T from the observation above?**

*This question is designed for extended answers that parent/ teacher will have to assign and guide child to attempt after the test has been completed.*

*Grading: This question type is not graded on this system and will not affect the final score as it was designed in such a way that it requires manual assistance.*